



## HPB- 40 Button Probe Temperature Ranges A and E

### Specifications

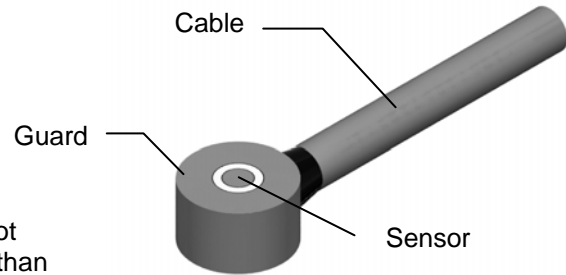
#### Temperature Ranges:

##### Temperature Range A

Low: 32° F [0° C]  
High: 302° F [150° C]

##### Temperature Range E

Low: -100° F [-73° C]  
High: 400° F [205° C]



**Linear Range:** 0.020 inches [0.51 millimeters] with a 5 foot [1.52 meters] long Capacitec L2 cable. For cables longer than 5ft consult factory.

**Maximum Range:** 0.040 inches [1.02 millimeters]

#### Calibration:

- A 20 point archived calibration record of voltage output versus nominal displacement is provided standard with every probe.
- Several NIST traceable calibrations are available.

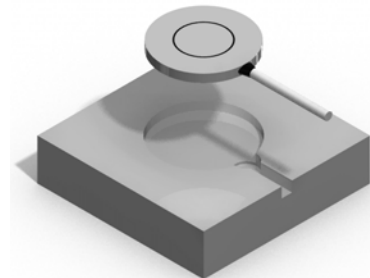
**Material:** Case, guard, and sensor are 303 stainless steel

**Driven Guard:** The guard element is driven with an electronic voltage of 2V to 20V peak to peak. Note, guard must not be grounded.

**Dip Coating:** "-D" epoxy dip coatings are optional to prevent accidental earth grounding or shorting of the elements.

#### Mounting:

- Capacitec HPB probes are intended to be mounted within a countersink.
- See mounting drawing on page 4 for details.



#### Cable:

- Coaxial Capacitec L2 or L3 cable is standard.
- Probe must be calibrated with the cable type and length selected.
- Cable must not be cut or spliced.

**Probe Thickness:** There is one standard thickness and 2 non-standard thicknesses. See drawing for dimensions.



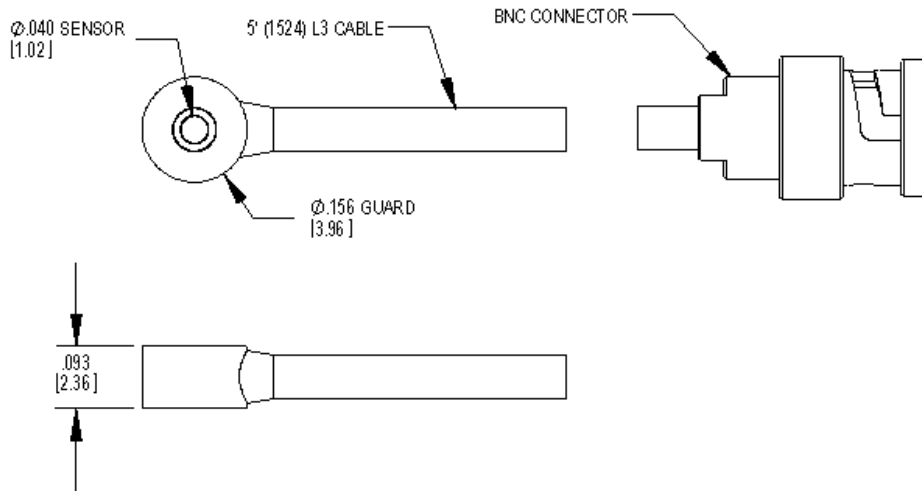
## HPB- 40 Button Probe Part Number Reference Guide

<b>HPB – 40</b>	<b>X</b>	<b>-</b>	<b>X</b>	<b>-</b>	<b>XX</b>	<b>-</b>	<b>XX</b>	<b>-</b>	<b>X</b>
	PROBE THICKNESS		OPERATING TEMPERATURE		CABLE TYPE		CABLE LENGTH		CONNECTOR TYPE
	A - .093" (2.36)		A - 32 to 302°F (0 to 150°C)		L2 - .093" coax (2.36)		5 - 5' Standard (1524)		M – 10-32 Microdot
	B - .065" (1.65)		E - -100 to 400°F (-73 to 205°C)		L3 - .063" coax (1.60)		X - Other in ft.		B – BNC
	C - .125" (3.18)								MCX – MCX

**(DIMENSIONS) IN MILLIMETERS**

**EXAMPLE: HPB-40A-A-L3-5-B**

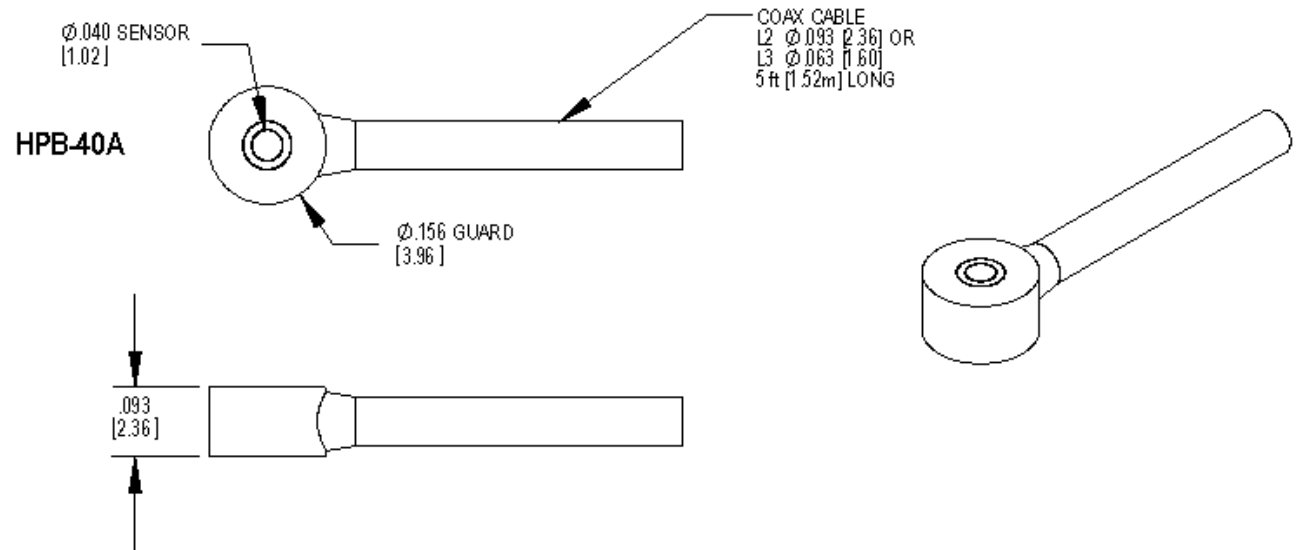
**HPB-40A**  
A TEMPERATURE RANGE




**Capacitec**  
**HPB-40**  
**Standard Button Probe**  
**Temperature Ranges A and E**  
**Thickness A**  
 DIMENSIONS ARE NOMINAL VALUES

CUSTOM THICKNESS OPTIONS	
OPTION	THICKNESS
B	.065 [1.65]
C	.125 [3.17]

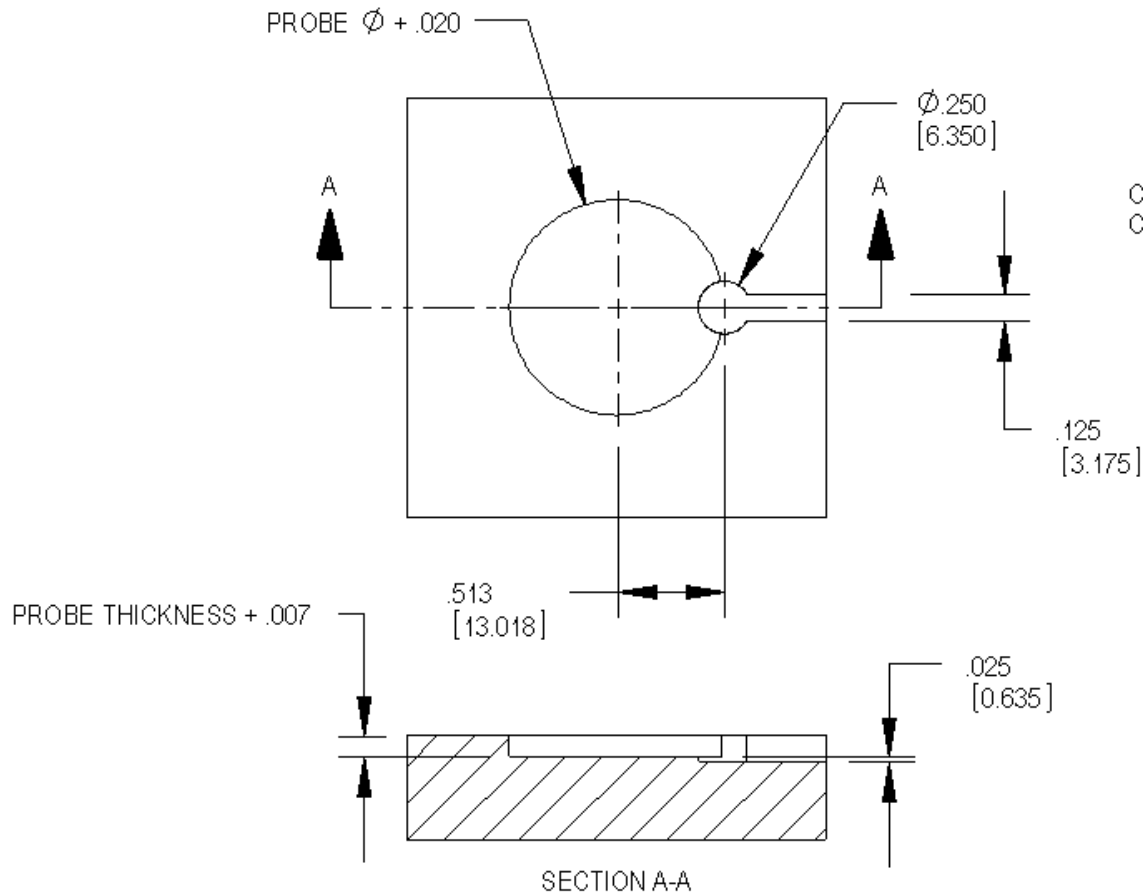
TEMPERATURE RANGE				
OPTION	RANGE (°F)		RANGE (°C)	
	LOW	HIGH	LOW	HIGH
A	32°	302°	0°	150°
E	-100°	400°	-73°	205°



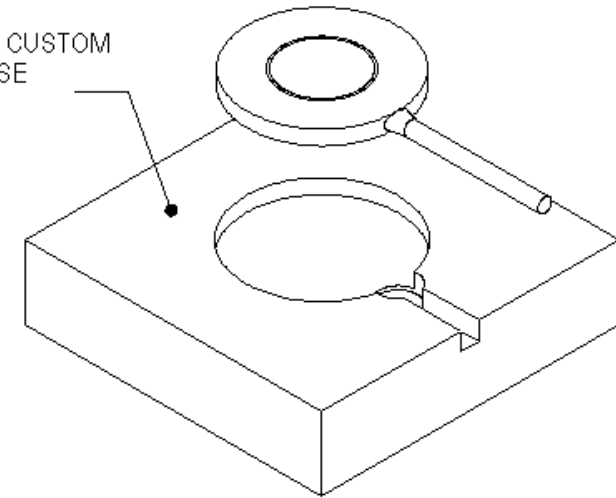
# Capacitec

## Standard Button Probe Install

### Temperature Ranges A and E



CAPACITEC SUPPLIED OR CUSTOM  
CUSTOMER SUPPLIED CASE



TYPICALLY CAPACITEC INSTALLED